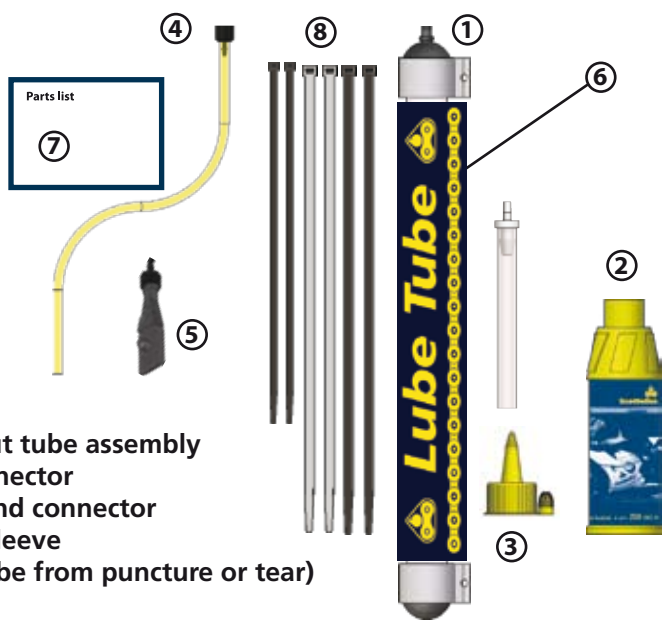


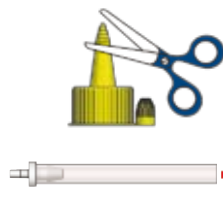
Parts List



1. Lube Tube
2. Scottol, 250ml
3. Spouted cap and spout tube assembly
4. Siphon tube with connector
5. Filler plug with luer and connector
6. High strength nylon sleeve (Protects your Lube Tube from puncture or tear)
7. Fitting instruction
8. Cable ties (6 assorted)

1. Fill Reservoir RMV / REP

Cut the sealed end off the spouted cap and push spout tubing firmly onto it.



Remove filler plug and breather from RMV or REP and fill if necessary. Depending on which system you have, proceed with either step 2a OR 2b.



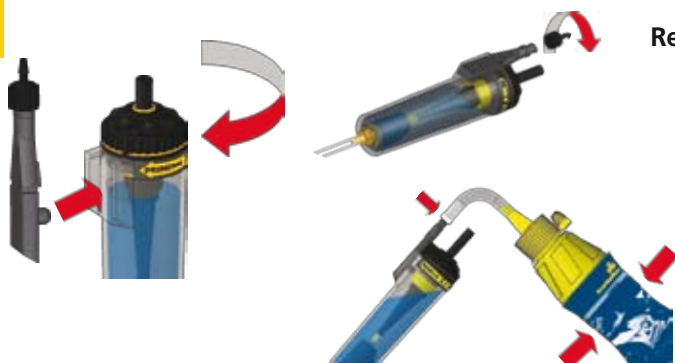
General Hints: Decide where you wish to position the Lube Tube, but fill and prime your existing system before fitting the Lube Tube for ease of installation.

For best performance, Lube Tube should be placed at the same height or no more than 10 cm below the reservoir. If placed too high, the reservoir may continue to flow even when the bike isn't running.

Avoid hot or moving components and ensure it can't be trapped by seat parts.

2a. Prime vSystem

If delivery tubing is empty:-
Remove filler plug and breather from RMV. Using the new filler plug in the Lube Tube kit, press it into the side of the RMV, and set RMV to Prime.



Remove twist lock connector from filler plug.

Connect the spout to the filler plug and squeeze the bottle to force oil down the delivery line until no air bubbles remain.

2b. Prime eSystem

If delivery tubing is empty:-
Navigate to the 'Prime' menu on the eSystem display unit. Press 'set' to run a prime cycle for 60 seconds. Repeat this step until oil starts to drip from the nibs.



3. Lube Tube Filling

Decide where you are going to position the Lube Tube before filling. Remember to keep within 10cm height of the reservoir and to avoid moving or hot components.



Fill the Lube Tube to approximately 5cm from the top. If in doubt, underfill, it can always be topped up when in position on the bike.

Hint: Expel air from the Lube Tube before filling, and don't overfill.

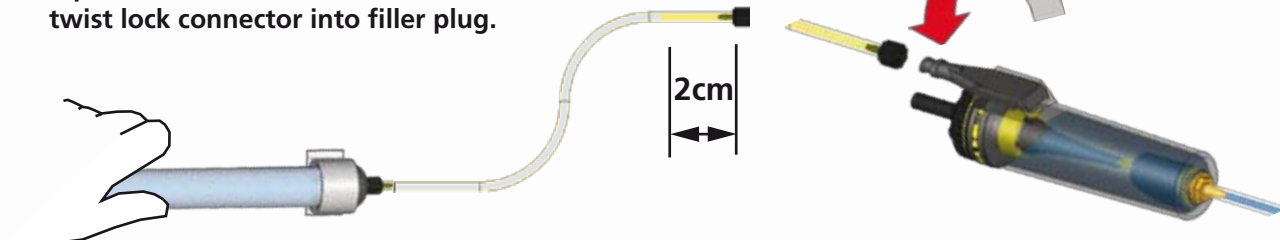


Connect the siphon tube to the top of the Lube Tube - twist to secure. This will avoid risk of spillage.

Route siphon tubing to reservoir. Trim siphon tubing if necessary and ensure twist lock connector is firmly pushed into the end of the siphon tubing.

Expel air from Lube Tube by squeezing gently.

Squeeze oil to within 2cm of connector, then fit twist lock connector into filler plug.



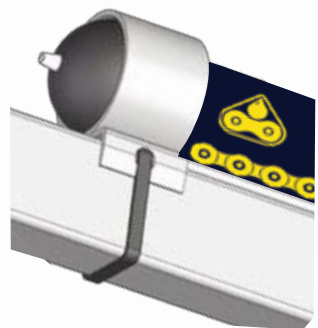
4. Lube Tube Fitting

Position Lube Tube. It can be fitted under the seat, inside a fairing panel, or in tail fairing.



Hint: The breather end should be uppermost.

The Lube Tube can be mounted by securing the sleeved ends to a frame section using cable ties.



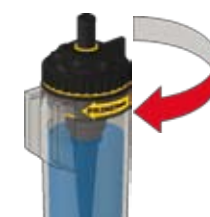
Alternatively the Lube Tube mounting sleeves can be glued into position. Thoroughly clean and abraid each surface before applying superglue. Press down and hold in position for 20 seconds.



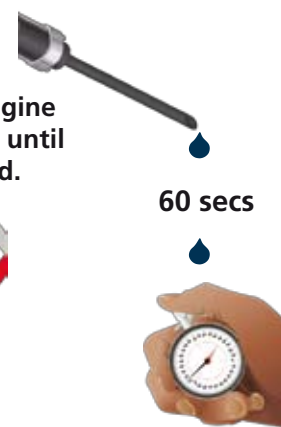
Once connected, set the flow rate by following either step 5a or 5b.

5a. Set Flow Rate, RMV

For RMV:-
Start your bike, allow the engine to warm up. Adjust the flow until 1 drop per minute is achieved.



Check flow after a short journey, adjust if necessary.



5b. Set Additional Reservoir, Fill Level and Flow, REP

Navigate to the Additional Reservoir Menu, then cycle through the available additional capacity reservoirs and let the eSystem know its new capacity.



Hint: When an additional reservoir is in place the oil level gauge will display the overall capacity of the system. Therefore, when both the eSystem reservoir and the Lube Tube are full the oil level should be set to 100%. NB if Lube Tube is not fully filled adjust percentage as appropriate.

Finally, navigate to the 'Driving Screen'. Use the button to cycle through the desired flow rate until 60-70 seconds per drop (s/dp) is shown. Check chain condition after a short journey and adjust as necessary.

